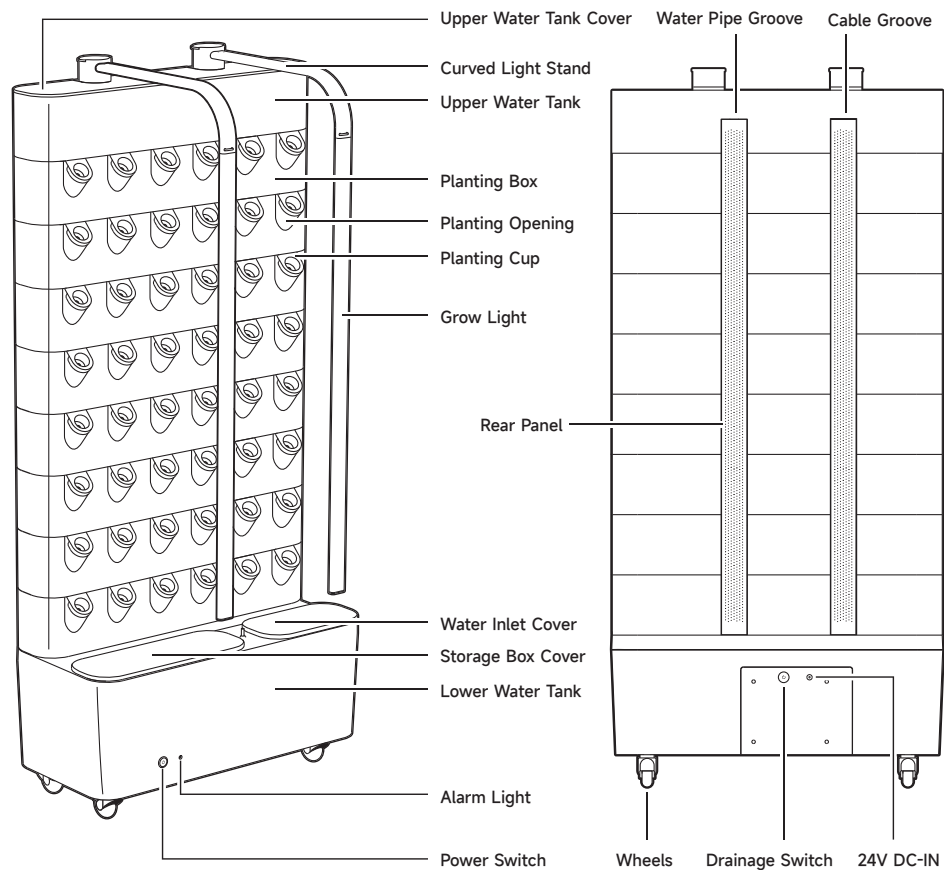
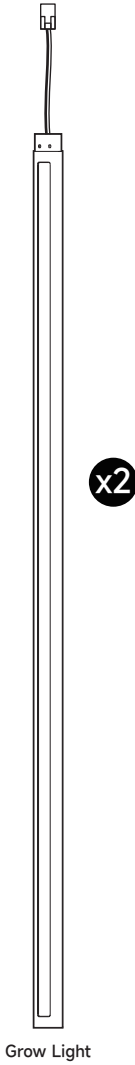
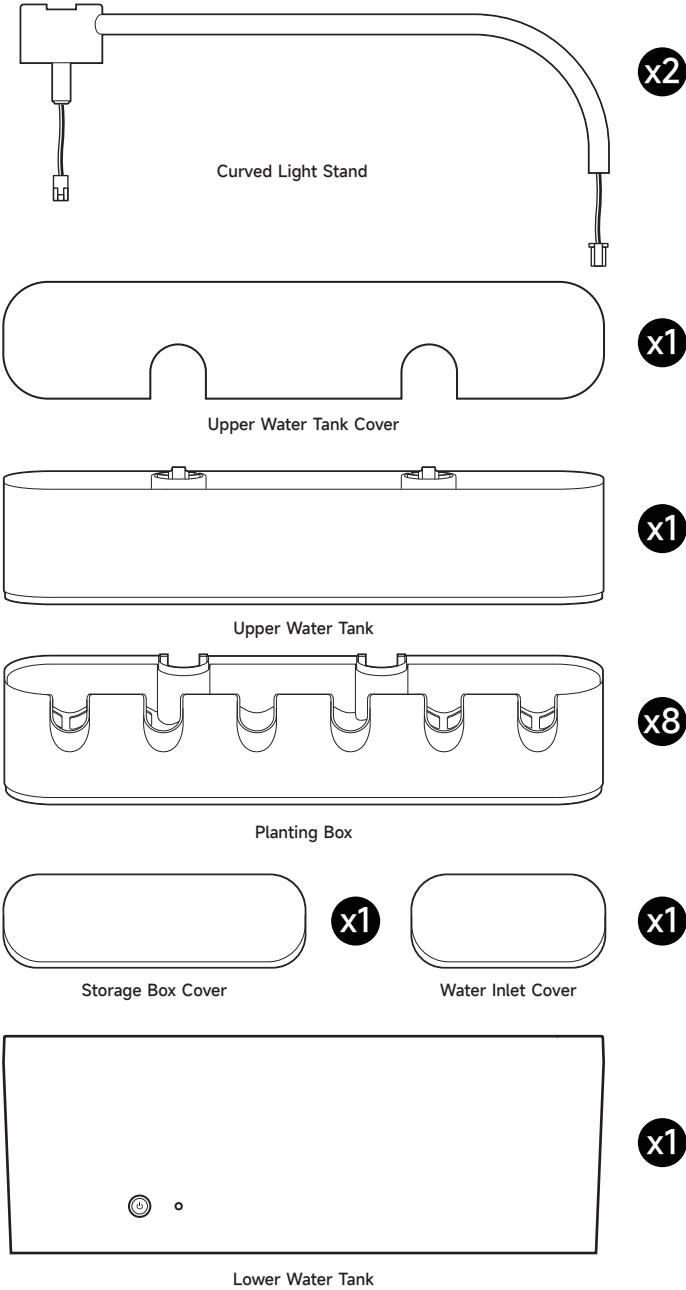


COMPONENT NAMES

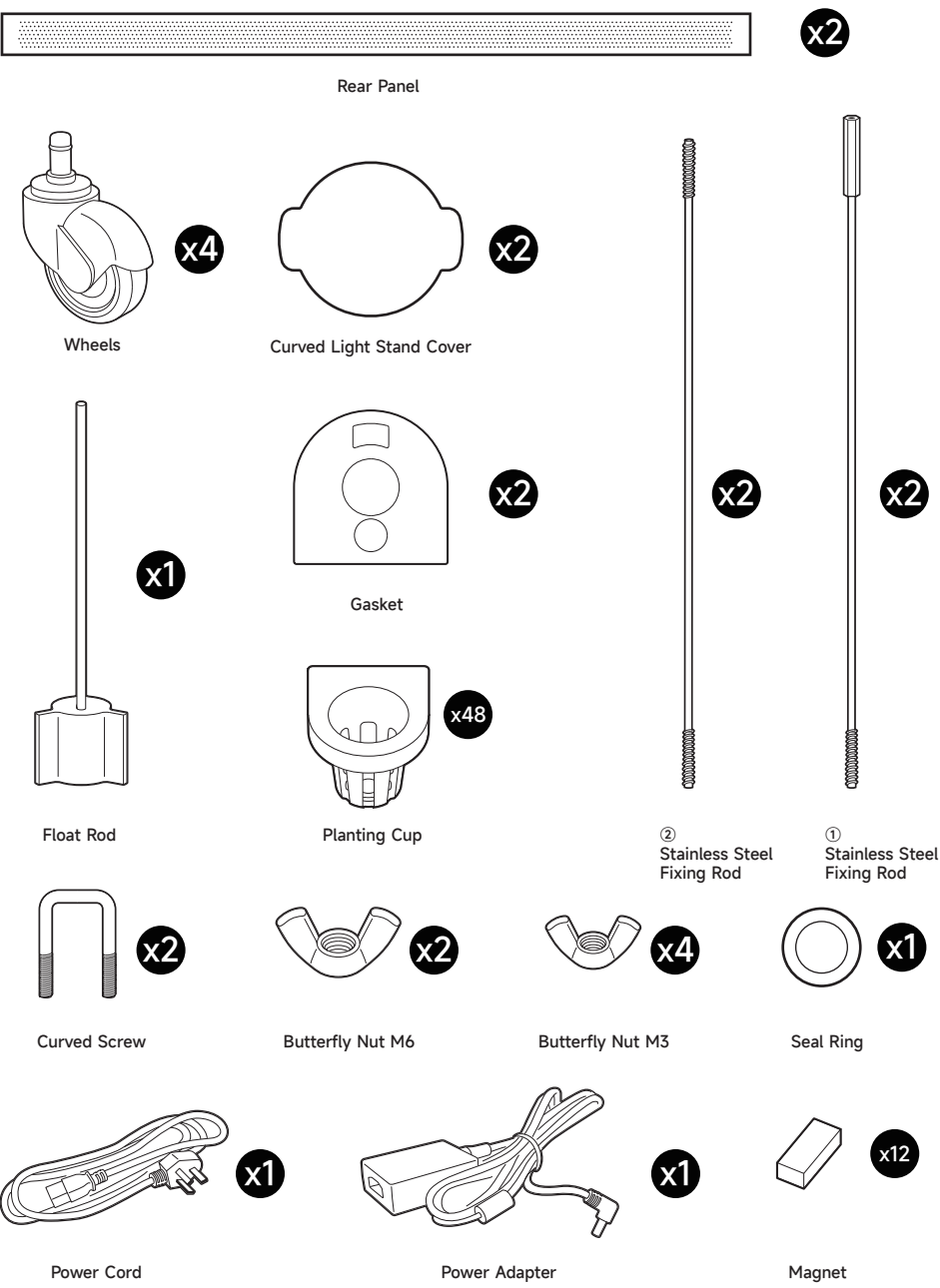
① Remove all blue protective films from the machine before use.



ACCESSORIES LIST



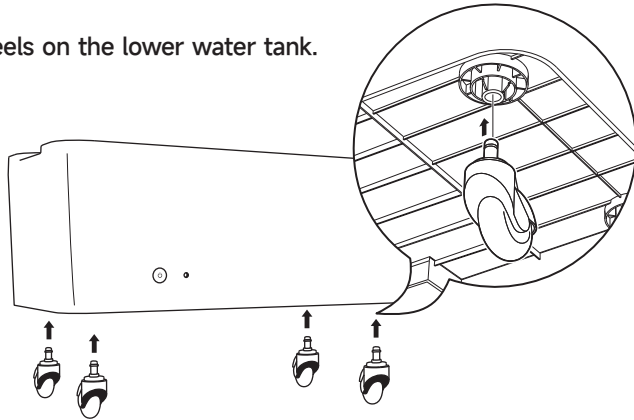
ACCESSORIES LIST



ASSEMBLY STEPS

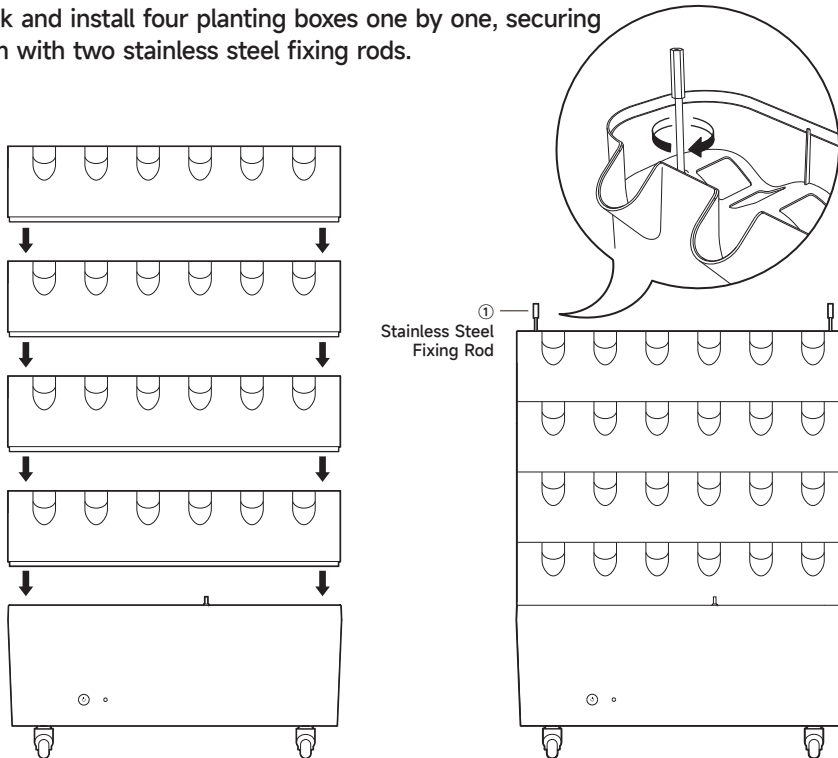
1

Install four wheels on the lower water tank.



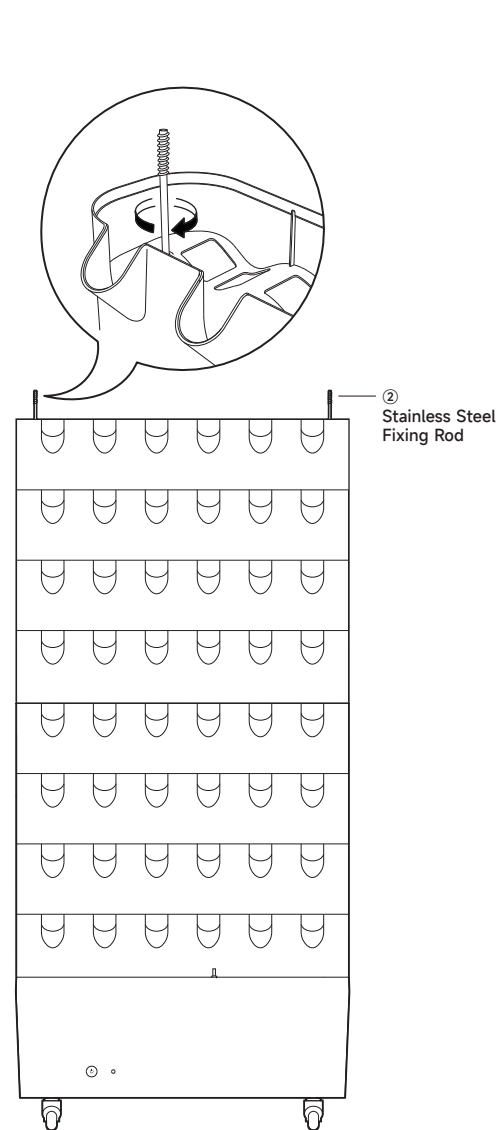
2

Stack and install four planting boxes one by one, securing them with two stainless steel fixing rods.



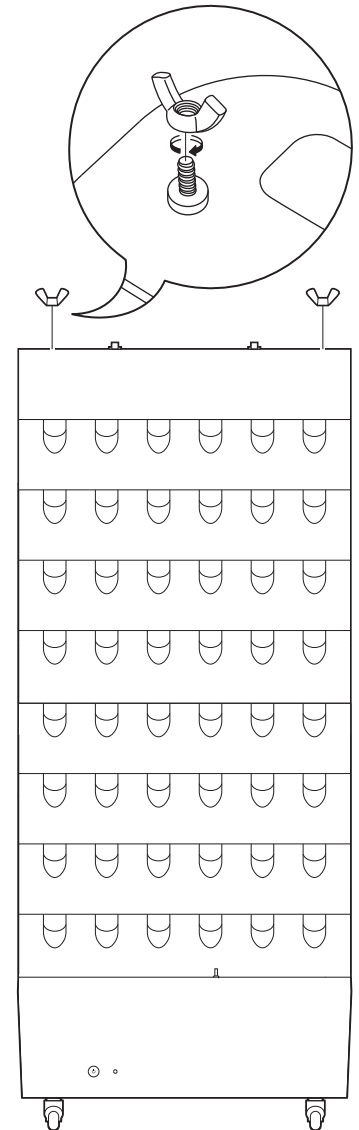
3

Stack and install the remaining four planting boxes one by one, installing two stainless steel fixing rods.



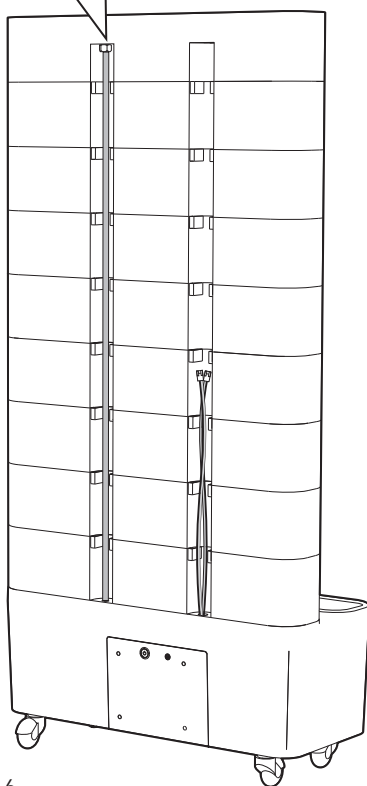
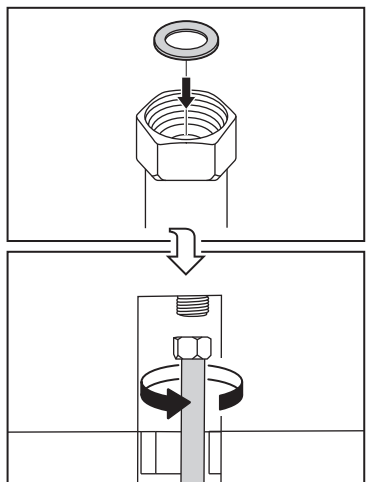
4

After installing the upper water tank, tighten the butterfly nut.



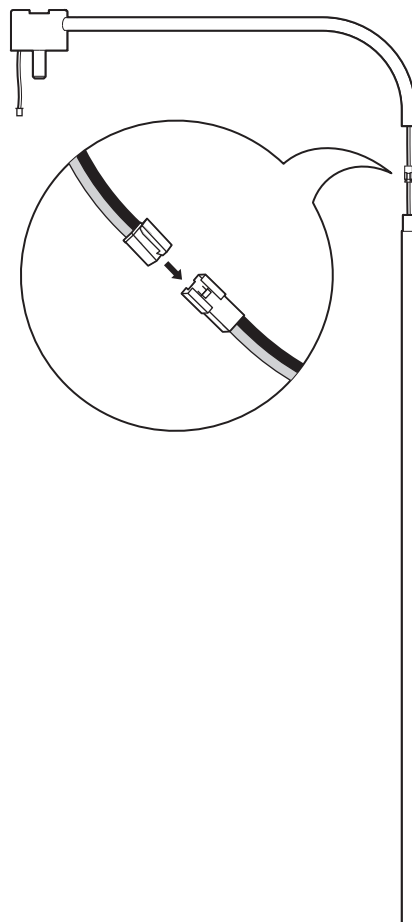
5

Place the seal ring in the tower head, then install the water pipe.



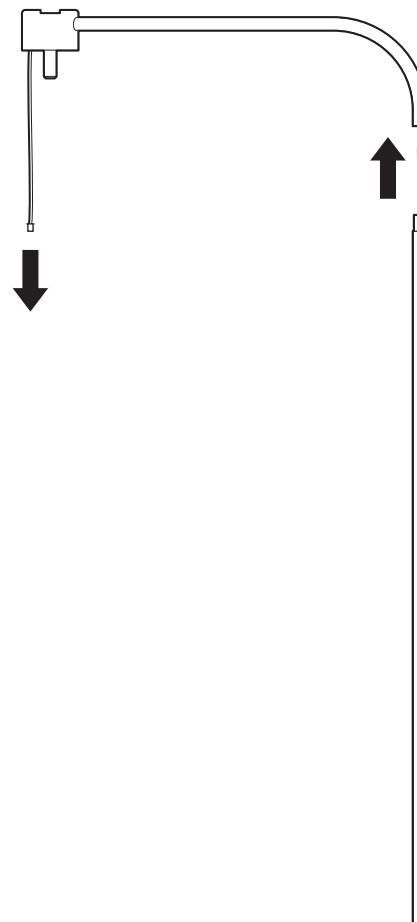
6

Connect the supplementary light wire with the curved tube wire.



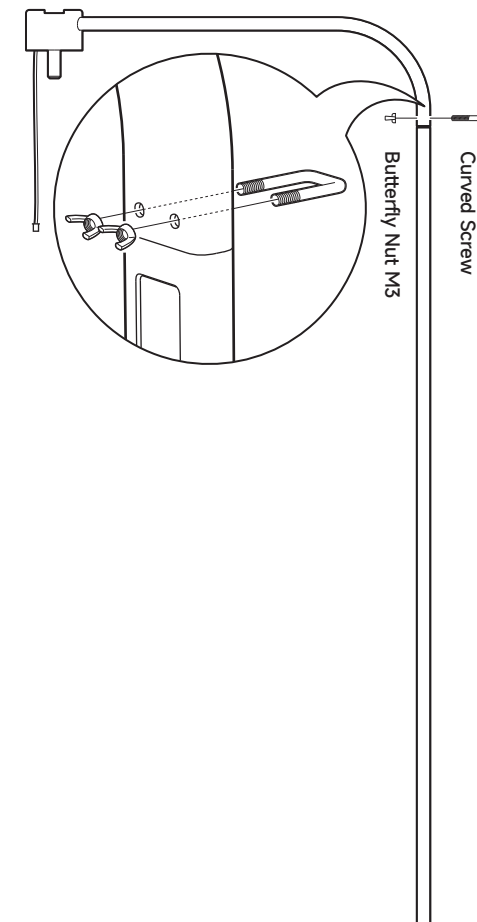
7

Gently pull the light wire in the direction of the arrow.



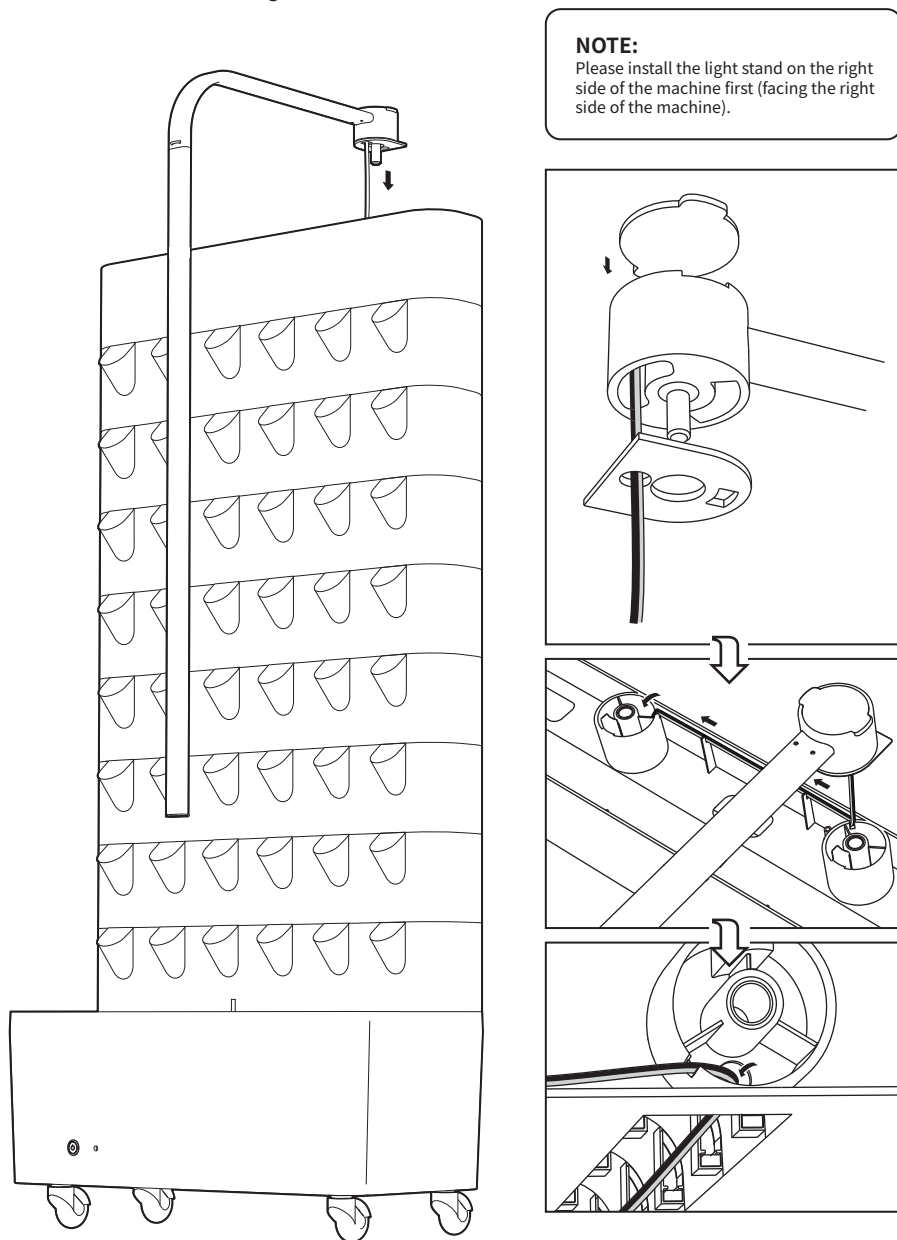
8

Secure the curved and straight light tubes with butterfly nut M3 and U-shape rods. Repeat this for the other set.



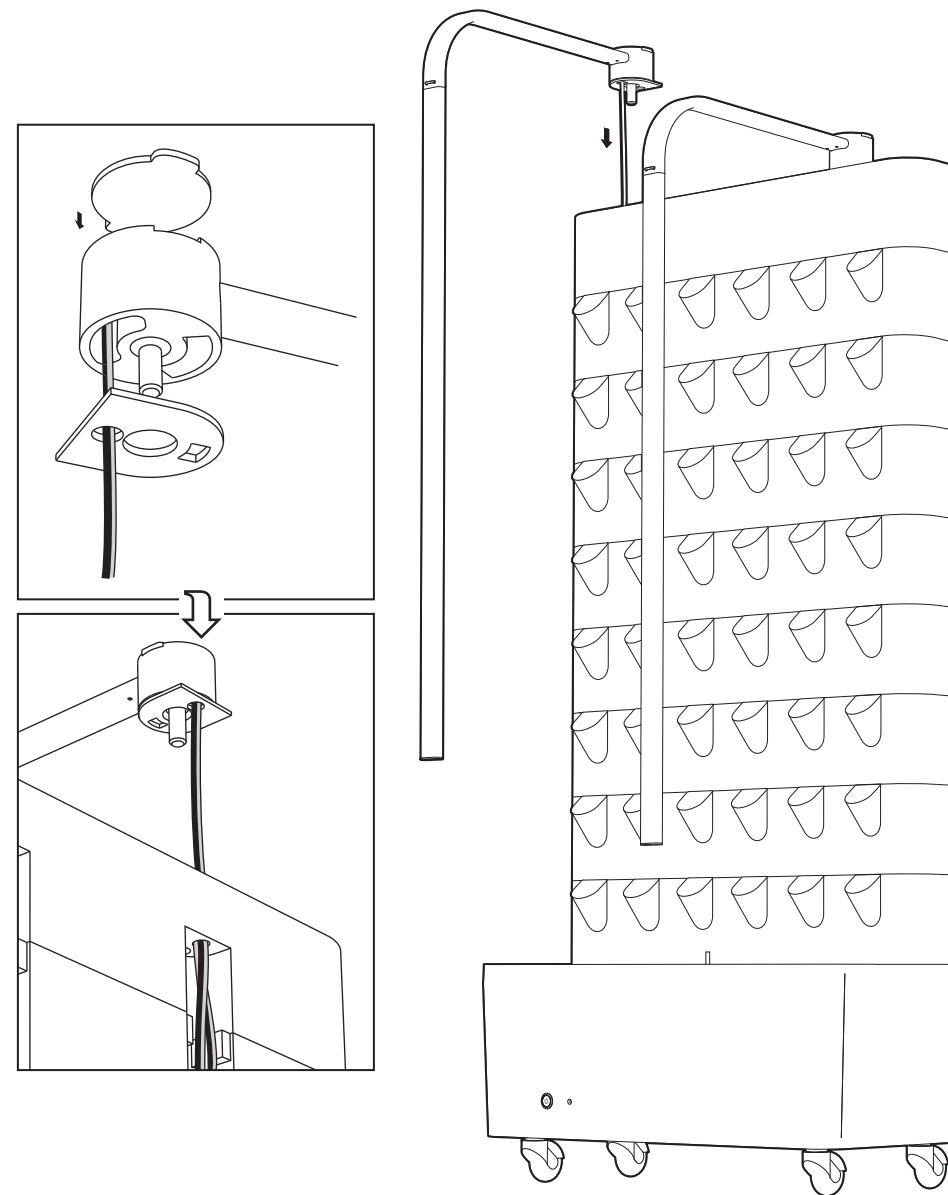
9

Install the curved light stand cover, pass the light wire through the gasket, then install the grow light on the right side of the upper water tank (facing the right side of the machine), and route the light wire.



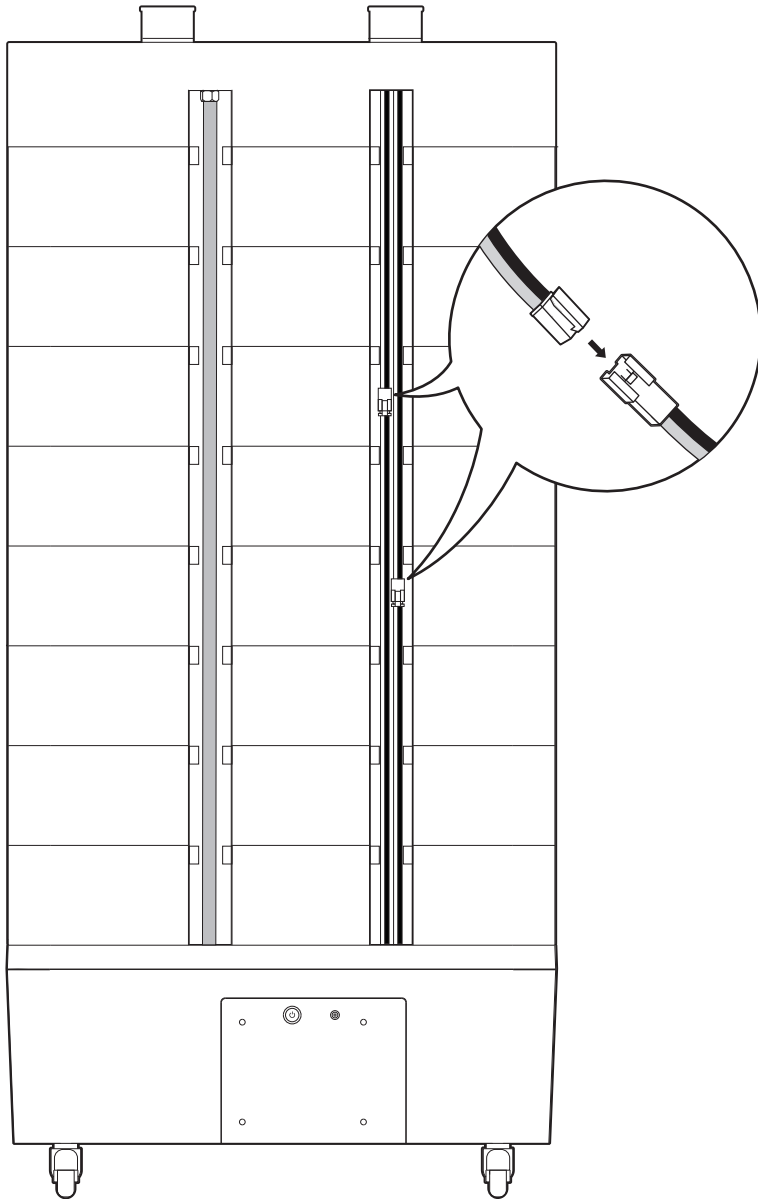
10

Install the curved light stand cover, pass the light wire through the gasket, then install the grow light on the left side of the upper water tank (facing the left side of the machine), and route the light wire.



11

Connect the two light wires together.

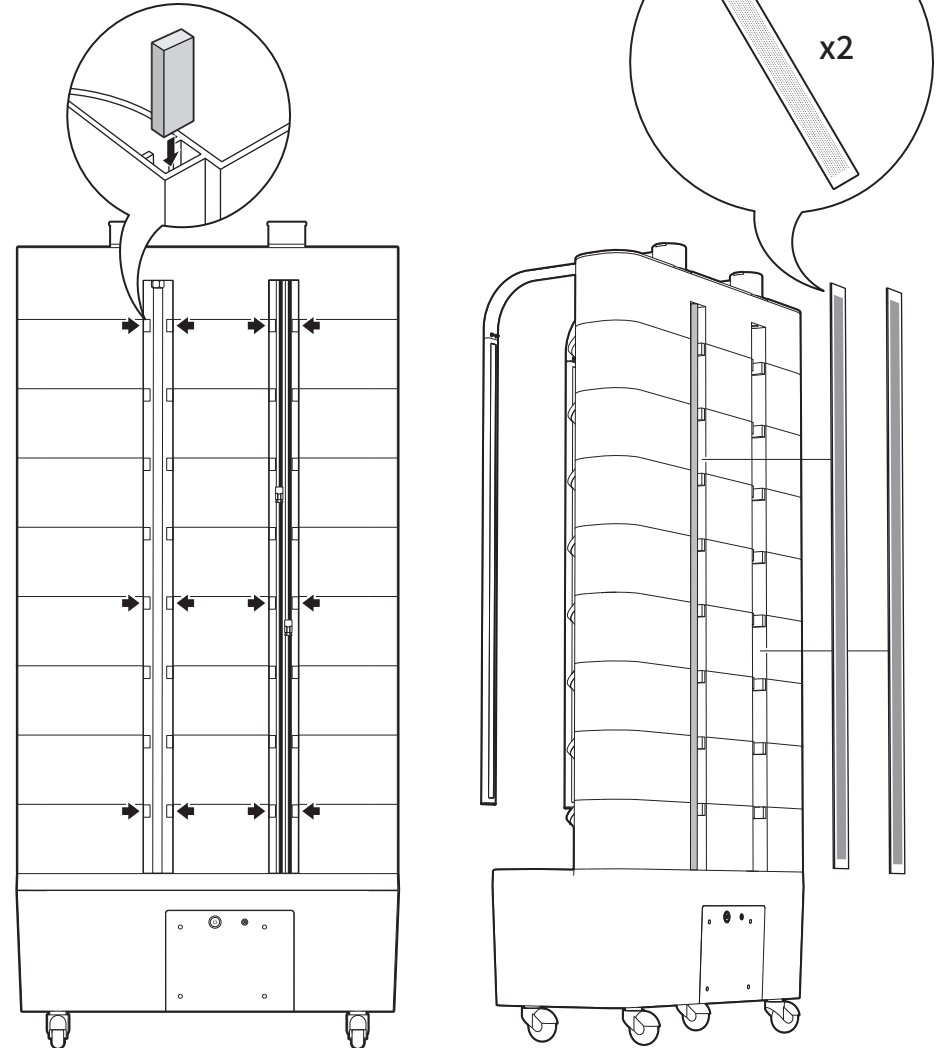


12

Place the 12 magnets in the designated positions on the machine, and then install the two rear panels.

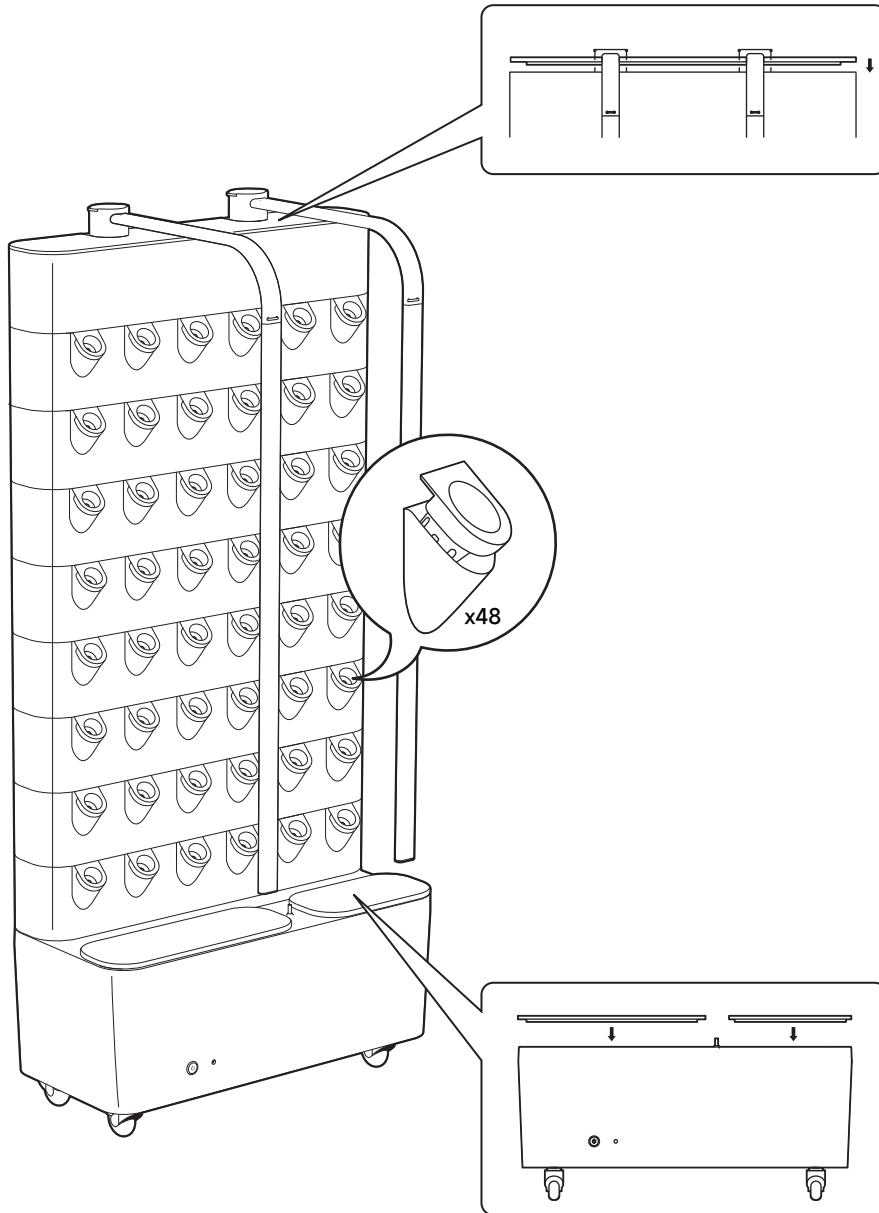
Note:

The positions for placing the 12 magnets are indicated by arrows; please place them according to the specified positions.



13

Install the upper water tank cover, storage box cover, water inlet cover, and finally insert the planting cup.



14

Connect the power cord to the power adapter, plug the plug into the rear power port of the lower water tank, and finally plug it into an AC socket.

